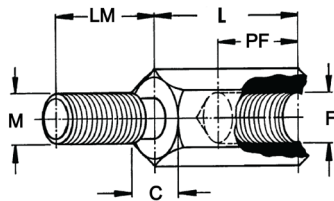


DISTANZIALI ESAGONALI IN OTTONE MASCHIO-FEMMINA



CODIFICA:

DEMF . X . X . XX
 ————— Lunghezza corpo (L)
 ————— Chiave - esagono corpo (C)
 ————— Diametro tipo filettatura: 2-M2,5 / 3-M3 / 4-M4 / 5-M5
 Serie

M/F	C	ART.	L	LM	PF
M 2,5	5,0 mm	DEMF.2.5.05	5	6,0	3,0
		DEMF.2.5.08	8	6,0	5,0
		DEMF.2.5.10	10	6,0	5,0
		DEMF.2.5.12	12	6,0	8,0
		DEMF.2.5.15	15	6,0	8,0
		DEMF.2.5.18	18	6,0	8,0
		DEMF.2.5.20	20	6,0	8,0
		DEMF.2.5.25	25	6,0	10,0
		DEMF.2.5.30	30	6,0	10,0
		DEMF.2.5.35	35	6,0	10,0
		DEMF.2.5.40	40	6,0	10,0
		DEMF.2.5.45	45	6,0	10,0
		DEMF.2.5.50	50	6,0	10,0

M/F	C	ART.	L	LM	PF
M 3	5,0 mm	DEMF.3.5.05	5	6,0	3,0
		DEMF.3.5.08	8	6,0	5,0
		DEMF.3.5.10	10	6,0	5,0
		DEMF.3.5.12	12	6,0	8,0
		DEMF.3.5.15	15	6,0	8,0
		DEMF.3.5.18	18	6,0	8,0
		DEMF.3.5.20	20	6,0	8,0
		DEMF.3.5.25	25	6,0	10,0
		DEMF.3.5.30	30	6,0	10,0
		DEMF.3.5.35	35	6,0	10,0
		DEMF.3.5.40	40	6,0	10,0
		DEMF.3.5.45	45	6,0	10,0
		DEMF.3.5.50	50	6,0	10,0

M/F	C	ART.	L	LM	PF
M 3	6,0 mm	DEMF.3.6.05	5	6,0	3,0
		DEMF.3.6.08	8	6,0	5,0
		DEMF.3.6.10	10	6,0	5,0
		DEMF.3.6.12	12	6,0	8,0
		DEMF.3.6.15	15	6,0	8,0
		DEMF.3.6.18	18	6,0	8,0
		DEMF.3.6.20	20	6,0	8,0
		DEMF.3.6.25	25	6,0	10,0
		DEMF.3.6.30	30	6,0	10,0
		DEMF.3.6.35	35	6,0	10,0
		DEMF.3.6.40	40	6,0	10,0
		DEMF.3.6.45	45	6,0	10,0
		DEMF.3.6.50	50	6,0	10,0

M/F	C	ART.	L	LM	PF
M 4	6,0 mm	DEMF.4.6.05	5	6,0	3,0
		DEMF.4.6.08	8	6,0	5,0
		DEMF.4.6.10	10	6,0	5,0
		DEMF.4.6.12	12	6,0	8,0
		DEMF.4.6.15	15	6,0	8,0
		DEMF.4.6.18	18	6,0	8,0
		DEMF.4.6.20	20	6,0	8,0
		DEMF.4.6.25	25	6,0	10,0
		DEMF.4.6.30	30	6,0	10,0
		DEMF.4.6.35	35	6,0	10,0
		DEMF.4.6.40	40	6,0	10,0
		DEMF.4.6.45	45	6,0	10,0
		DEMF.4.6.50	50	6,0	10,0

M/F	C	ART.	L	LM	PF
M 4	7,0 mm	DEMF.4.7.05	5	6,0	3,0
		DEMF.4.7.08	8	6,0	5,0
		DEMF.4.7.10	10	6,0	5,0
		DEMF.4.7.12	12	6,0	8,0
		DEMF.4.7.15	15	6,0	8,0
		DEMF.4.7.18	18	6,0	8,0
		DEMF.4.7.20	20	6,0	8,0
		DEMF.4.7.25	25	6,0	10,0
		DEMF.4.7.30	30	6,0	10,0
		DEMF.4.7.35	35	6,0	10,0
		DEMF.4.7.40	40	6,0	10,0
		DEMF.4.7.45	45	6,0	10,0
		DEMF.4.7.50	50	6,0	10,0

M/F	C	ART.	L	LM	PF
M 5	7,0 mm	DEMF.5.7.05	5	6,0	3,0
		DEMF.5.7.08	8	6,0	5,0
		DEMF.5.7.10	10	6,0	5,0
		DEMF.5.7.12	12	6,0	8,0
		DEMF.5.7.15	15	6,0	8,0
		DEMF.5.7.18	18	6,0	8,0
		DEMF.5.7.20	20	6,0	8,0
		DEMF.5.7.25	25	6,0	10,0
		DEMF.5.7.30	30	6,0	10,0
		DEMF.5.7.35	35	6,0	10,0
		DEMF.5.7.40	40	6,0	10,0
		DEMF.5.7.45	45	6,0	10,0
		DEMF.5.7.50	50	6,0	10,0

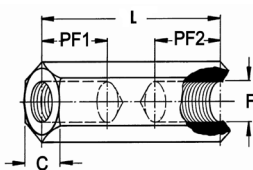
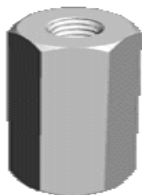
Ulteriori esecuzioni su richiesta! Come ordinare:

CODIFICA:

DEFE . X . X . XX . XX . XX . X
 ————— Materiale: 1-Fe37 zincato/ 2-Ottone/ 3-Inox
 ————— PF
 ————— LM
 ————— Lunghezza corpo (L)
 ————— Chiave - esagono corpo (C)
 ————— Diametro tipo filettatura: 2-M2,5 / 3-M3 / 4-M4 / 5-M5
 Serie



DISTANZIALI ESAGONALI IN OTTONE FEMMINA-FEMMINA



CODIFICA:

DEFF . X . X . XX
 —————
 ————— Lunghezza corpo (L)
 ————— Chiave - esagono corpo (C)
 ————— Diametro tipo filettatura: 2-M2,5 / 3-M3 / 4-M4 / 5-M5
 Serie

F	C	ART.	L	PF1	PF2
M 2,5	5,0 mm	DEFF.2.5.05	5	=L	-
		DEFF.2.5.08	8	=L	-
		DEFF.2.5.10	10	=L	-
		DEFF.2.5.12	12	=L	-
		DEFF.2.5.15	15	6,0	6,0
		DEFF.2.5.18	18	6,0	6,0
		DEFF.2.5.20	20	6,0	6,0
		DEFF.2.5.25	25	6,0	6,0
		DEFF.2.5.30	30	6,0	6,0
		DEFF.2.5.35	35	6,0	6,0
		DEFF.2.5.40	40	6,0	6,0
		DEFF.2.5.45	45	6,0	6,0
		DEFF.2.5.50	50	6,0	6,0

F	C	ART.	L	PF1	PF2
M 3	5,0 mm	DEFF.3.5.05	5	=L	-
		DEFF.3.5.08	8	=L	-
		DEFF.3.5.10	10	=L	-
		DEFF.3.5.12	12	=L	-
		DEFF.3.5.15	15	6,0	6,0
		DEFF.3.5.18	18	6,0	6,0
		DEFF.3.5.20	20	6,0	6,0
		DEFF.3.5.25	25	6,0	6,0
		DEFF.3.5.30	30	6,0	6,0
		DEFF.3.5.35	35	6,0	6,0
		DEFF.3.5.40	40	6,0	6,0
		DEFF.3.5.45	45	6,0	6,0
		DEFF.3.5.50	50	6,0	6,0

F	C	ART.	L	PF1	PF2
M 3	6,0 mm	DEFF.3.6.05	5	=L	-
		DEFF.3.6.08	8	=L	-
		DEFF.3.6.10	10	=L	-
		DEFF.3.6.12	12	=L	-
		DEFF.3.6.15	15	6,0	6,0
		DEFF.3.6.18	18	6,0	6,0
		DEFF.3.6.20	20	6,0	6,0
		DEFF.3.6.25	25	6,0	6,0
		DEFF.3.6.30	30	6,0	6,0
		DEFF.3.6.35	35	6,0	6,0
		DEFF.3.6.40	40	6,0	6,0
		DEFF.3.6.45	45	6,0	6,0
		DEFF.3.6.50	50	6,0	6,0

F	C	ART.	L	PF1	PF2
M 4	6,0 mm	DEFF.4.6.05	5	=L	-
		DEFF.4.6.08	8	=L	-
		DEFF.4.6.10	10	=L	-
		DEFF.4.6.12	12	=L	-
		DEFF.4.6.15	15	6,0	6,0
		DEFF.4.6.18	18	6,0	6,0
		DEFF.4.6.20	20	6,0	6,0
		DEFF.4.6.25	25	6,0	6,0
		DEFF.4.6.30	30	6,0	6,0
		DEFF.4.6.35	35	6,0	6,0
		DEFF.4.6.40	40	6,0	6,0
		DEFF.4.6.45	45	6,0	6,0
		DEFF.4.6.50	50	6,0	6,0

F	C	ART.	L	PF1	PF2
M 4	7,0 mm	DEFF.4.7.05	5	=L	-
		DEFF.4.7.08	8	=L	-
		DEFF.4.7.10	10	=L	-
		DEFF.4.7.12	12	=L	-
		DEFF.4.7.15	15	6,0	6,0
		DEFF.4.7.18	18	6,0	6,0
		DEFF.4.7.20	20	6,0	6,0
		DEFF.4.7.25	25	6,0	6,0
		DEFF.4.7.30	30	6,0	6,0
		DEFF.4.7.35	35	6,0	6,0
		DEFF.4.7.40	40	6,0	6,0
		DEFF.4.7.45	45	6,0	6,0
		DEFF.4.7.50	50	6,0	6,0

F	C	ART.	L	PF1	PF2
M 5	7,0 mm	DEFF.5.7.05	5	=L	-
		DEFF.5.7.08	8	=L	-
		DEFF.5.7.10	10	=L	-
		DEFF.5.7.12	12	=L	-
		DEFF.5.7.15	15	6,0	6,0
		DEFF.5.7.18	18	6,0	6,0
		DEFF.5.7.20	20	6,0	6,0
		DEFF.5.7.25	25	6,0	6,0
		DEFF.5.7.30	30	6,0	6,0
		DEFF.5.7.35	35	6,0	6,0
		DEFF.5.7.40	40	6,0	6,0
		DEFF.5.7.45	45	6,0	6,0
		DEFF.5.7.50	50	6,0	6,0

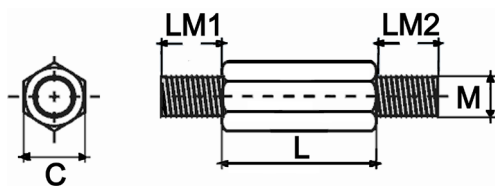
Ulteriori esecuzioni su richiesta! Come ordinare:

CODIFICA:

DEFF . X . X . XX . XX . XX . X
 —————
 ————— Materiale: 1-Fe37 zincato/ 2-Ottone/ 3-Inox
 ————— PF2
 ————— PF1
 ————— Lunghezza corpo (L)
 ————— Chiave - esagono corpo (C)
 ————— Diametro tipo filettatura: 2-M2,5 / 3-M3 / 4-M4 / 5-M5
 Serie



DISTANZIALI ESAGONALI IN OTTONE MASCHIO-MASCHIO



CODIFICA:

DEMM . X . X . XX
 ————— Lunghezza corpo (L)
 ————— Chiave - esagono corpo (C)
 ————— Diametro tipo filettatura: 2-M2,5 / 3-M3 / 4-M4 / 5-M5
 ————— Serie

M	C	ART.	L	LM1	LM2
M 2,5	5,0 mm	DEMM.2.5.05	5	6,0	6,0
		DEMM.2.5.08	8	6,0	6,0
		DEMM.2.5.10	10	6,0	6,0
		DEMM.2.5.12	12	6,0	6,0
		DEMM.2.5.15	15	6,0	6,0
		DEMM.2.5.18	18	6,0	6,0
		DEMM.2.5.20	20	6,0	6,0
		DEMM.2.5.25	25	6,0	6,0
		DEMM.2.5.30	30	6,0	6,0
		DEMM.2.5.35	35	6,0	6,0
		DEMM.2.5.40	40	6,0	6,0
		DEMM.2.5.45	45	6,0	6,0
		DEMM.2.5.50	50	6,0	6,0

M	C	ART.	L	LM1	LM2
M 3	5,0 mm	DEMM.3.5.05	5	6,0	6,0
		DEMM.3.5.08	8	6,0	6,0
		DEMM.3.5.10	10	6,0	6,0
		DEMM.3.5.12	12	6,0	6,0
		DEMM.3.5.15	15	6,0	6,0
		DEMM.3.5.18	18	6,0	6,0
		DEMM.3.5.20	20	6,0	6,0
		DEMM.3.5.25	25	6,0	6,0
		DEMM.3.5.30	30	6,0	6,0
		DEMM.3.5.35	35	6,0	6,0
		DEMM.3.5.40	40	6,0	6,0
		DEMM.3.5.45	45	6,0	6,0
		DEMM.3.5.50	50	6,0	6,0

M	C	ART.	L	LM1	LM2
M 3	6,0 mm	DEMM.3.6.05	5	6,0	6,0
		DEMM.3.6.08	8	6,0	6,0
		DEMM.3.6.10	10	6,0	6,0
		DEMM.3.6.12	12	6,0	6,0
		DEMM.3.6.15	15	6,0	6,0
		DEMM.3.6.18	18	6,0	6,0
		DEMM.3.6.20	20	6,0	6,0
		DEMM.3.6.25	25	6,0	6,0
		DEMM.3.6.30	30	6,0	6,0
		DEMM.3.6.35	35	6,0	6,0
		DEMM.3.6.40	40	6,0	6,0
		DEMM.3.6.45	45	6,0	6,0
		DEMM.3.6.50	50	6,0	6,0

M	C	ART.	L	LM1	LM2
M 4	6,0 mm	DEMM.4.6.05	5	6,0	6,0
		DEMM.4.6.08	8	6,0	6,0
		DEMM.4.6.10	10	6,0	6,0
		DEMM.4.6.12	12	6,0	6,0
		DEMM.4.6.15	15	6,0	6,0
		DEMM.4.6.18	18	6,0	6,0
		DEMM.4.6.20	20	6,0	6,0
		DEMM.4.6.25	25	6,0	6,0
		DEMM.4.6.30	30	6,0	6,0
		DEMM.4.6.35	35	6,0	6,0
		DEMM.4.6.40	40	6,0	6,0
		DEMM.4.6.45	45	6,0	6,0
		DEMM.4.6.50	50	6,0	6,0

M	C	ART.	L	LM1	LM2
M 4	7,0 mm	DEMM.4.7.05	5	6,0	6,0
		DEMM.4.7.08	8	6,0	6,0
		DEMM.4.7.10	10	6,0	6,0
		DEMM.4.7.12	12	6,0	6,0
		DEMM.4.7.15	15	6,0	6,0
		DEMM.4.7.18	18	6,0	6,0
		DEMM.4.7.20	20	6,0	6,0
		DEMM.4.7.25	25	6,0	6,0
		DEMM.4.7.30	30	6,0	6,0
		DEMM.4.7.35	35	6,0	6,0
		DEMM.4.7.40	40	6,0	6,0
		DEMM.4.7.45	45	6,0	6,0
		DEMM.4.7.50	50	6,0	6,0

M	C	ART.	L	LM1	LM2
M 5	7,0 mm	DEMM.5.7.05	5	6,0	6,0
		DEMM.5.7.08	8	6,0	6,0
		DEMM.5.7.10	10	6,0	6,0
		DEMM.5.7.12	12	6,0	6,0
		DEMM.5.7.15	15	6,0	6,0
		DEMM.5.7.18	18	6,0	6,0
		DEMM.5.7.20	20	6,0	6,0
		DEMM.5.7.25	25	6,0	6,0
		DEMM.5.7.30	30	6,0	6,0
		DEMM.5.7.35	35	6,0	6,0
		DEMM.5.7.40	40	6,0	6,0
		DEMM.5.7.45	45	6,0	6,0
		DEMM.5.7.50	50	6,0	6,0

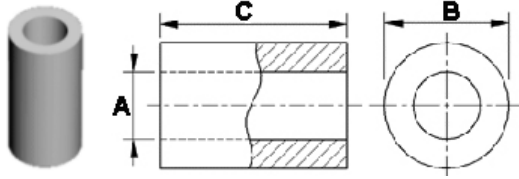
Ulteriori esecuzioni su richiesta! Come ordinare:

CODIFICA:

DEFF . X . X . XX . XX . XX . X
 ————— Materiale: 1-Fe37 zincato/ 2-Ottone/ 3-Inox
 ————— LM2
 ————— LM1
 ————— Lunghezza corpo (L)
 ————— Chiave - esagono corpo (C)
 ————— Diametro tipo filettatura: 2-M2,5 / 3-M3 / 4-M4 / 5-M5
 ————— Serie



TUBETTI IN OTTONE



CODIFICA:

DT · X · XX · X

Diametro foro (A): 2-M2,5 / 3-M3 / 4-M4 / 5-M5
Lunghezza corpo (C)
Chiave corpo (B)
Serie

B	A	ART.	C
5	2,6 mm	DT.5.05.2	5
		DT.5.06.2	6
		DT.5.07.2	7
		DT.5.08.2	8
		DT.5.09.2	9
		DT.5.10.2	10
		DT.5.11.2	11
		DT.5.12.2	12
		DT.5.13.2	13
		DT.5.14.2	14
		DT.5.15.2	15
		DT.5.20.2	20
		DT.5.25.2	25
		DT.5.30.2	30
		DT.5.35.2	35
		DT.5.40.2	40
		DT.5.45.2	45
		DT.5.50.2	50
		DT.5.55.2	55
		DT.5.60.2	60

B	A	ART.	C
5	3,2 mm	DT.5.05.3	5
		DT.5.06.3	6
		DT.5.07.3	7
		DT.5.08.3	8
		DT.5.09.3	9
		DT.5.10.3	10
		DT.5.11.3	11
		DT.5.12.3	12
		DT.5.13.3	13
		DT.5.14.3	14
		DT.5.15.3	15
		DT.5.20.3	20
		DT.5.25.3	25
		DT.5.30.3	30
		DT.5.35.3	35
		DT.5.40.3	40
		DT.5.45.3	45
		DT.5.50.3	50
		DT.5.55.3	55
		DT.5.60.3	60

B	A	ART.	C
6	3,2 mm	DT.6.05.3	5
		DT.6.06.3	6
		DT.6.07.3	7
		DT.6.08.3	8
		DT.6.09.3	9
		DT.6.10.3	10
		DT.6.11.3	11
		DT.6.12.3	12
		DT.6.13.3	13
		DT.6.14.3	14
		DT.6.15.3	15
		DT.6.20.3	20
		DT.6.25.3	25
		DT.6.30.3	30
		DT.6.35.3	35
		DT.6.40.3	40
		DT.6.45.3	45
		DT.6.50.3	50
		DT.6.55.3	55
		DT.6.60.3	60

B	A	ART.	C
6	4,2 mm	DT.6.05.4	5
		DT.6.06.4	6
		DT.6.07.4	7
		DT.6.08.4	8
		DT.6.09.4	9
		DT.6.10.4	10
		DT.6.11.4	11
		DT.6.12.4	12
		DT.6.13.4	13
		DT.6.14.4	14
		DT.6.15.4	15
		DT.6.20.4	20
		DT.6.25.4	25
		DT.6.30.4	30
		DT.6.35.4	35
		DT.6.40.4	40
		DT.6.45.4	45
		DT.6.50.4	50
		DT.6.55.4	55
		DT.6.60.4	60

B	A	ART.	C
7	4,2 mm	DT.7.05.4	5
		DT.7.06.4	6
		DT.7.07.4	7
		DT.7.08.4	8
		DT.7.09.4	9
		DT.7.10.4	10
		DT.7.11.4	11
		DT.7.12.4	12
		DT.7.13.4	13
		DT.7.14.4	14
		DT.7.15.4	15
		DT.7.20.4	20
		DT.7.25.4	25
		DT.7.30.4	30
		DT.7.35.4	35
		DT.7.40.4	40
		DT.7.45.4	45
		DT.7.50.4	50
		DT.7.55.4	55
		DT.7.60.4	60

B	A	ART.	C
7	5,2 mm	DT.7.05.5	5
		DT.7.06.5	6
		DT.7.07.5	7
		DT.7.08.5	8
		DT.7.09.5	9
		DT.7.10.5	10
		DT.7.11.5	11
		DT.7.12.5	12
		DT.7.13.5	13
		DT.7.14.5	14
		DT.7.15.5	15
		DT.7.20.5	20
		DT.7.25.5	25
		DT.7.30.5	30
		DT.7.35.5	35
		DT.7.40.5	40
		DT.7.45.5	45
		DT.7.50.5	50
		DT.7.55.5	55
		DT.7.60.5	60

Ulteriori esecuzioni su richiesta!

